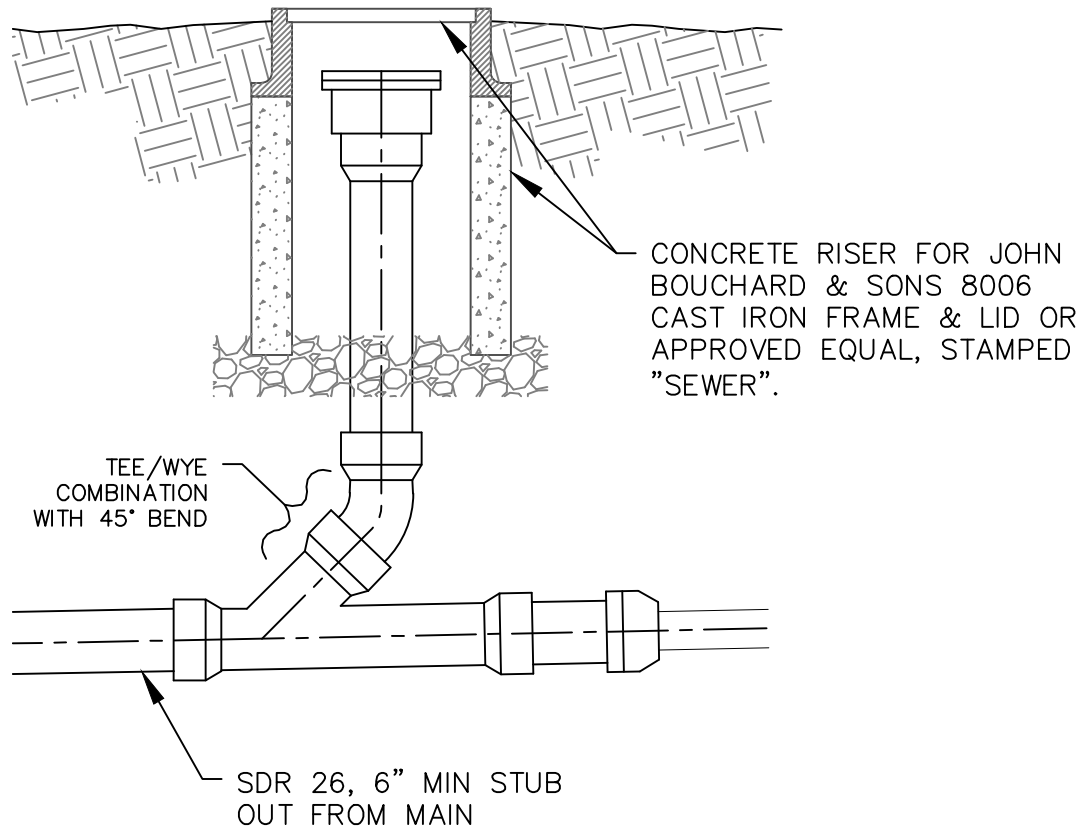
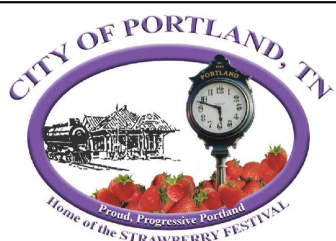


NOTES:

1. CONCRETE RISERS SHALL BE USED FOR ALL CLEANOUTS AT THE RIGHT-OF-WAY.
2. CONCRETE RISERS SHALL BE USED FOR ANY CLEANOUTS INSTALLED UNDER HARD SURFACE (I.E. PAVEMENT, CONCRETE, OR GRAVEL DRIVEWAYS)
3. CONCRETE BOXES SHALL BE INSTALLED ON ALL COMMERCIAL AND INDUSTRIAL LOCATIONS.
4. PLASTIC RISERS MAY BE USED FOR ANY CLEANOUTS ON A RESIDENTIAL CUSTOMER SIDE INSTALLED UNDER SOFT SURFACES (I.E. GRASS) AND AT LEAST THREE (3) FEET AWAY FROM ANY HARD SURFACE (I.E. PAVEMENT, GRAVEL, ETC..)



CLEANOUT BOX
N.T.S.



CITY OF PORTLAND
DEPARTMENT OF UTILITIES – SEWER
STANDARD SEWER DETAILS

REVISION NO: 2
DATE: 01.27.2022

WW-08