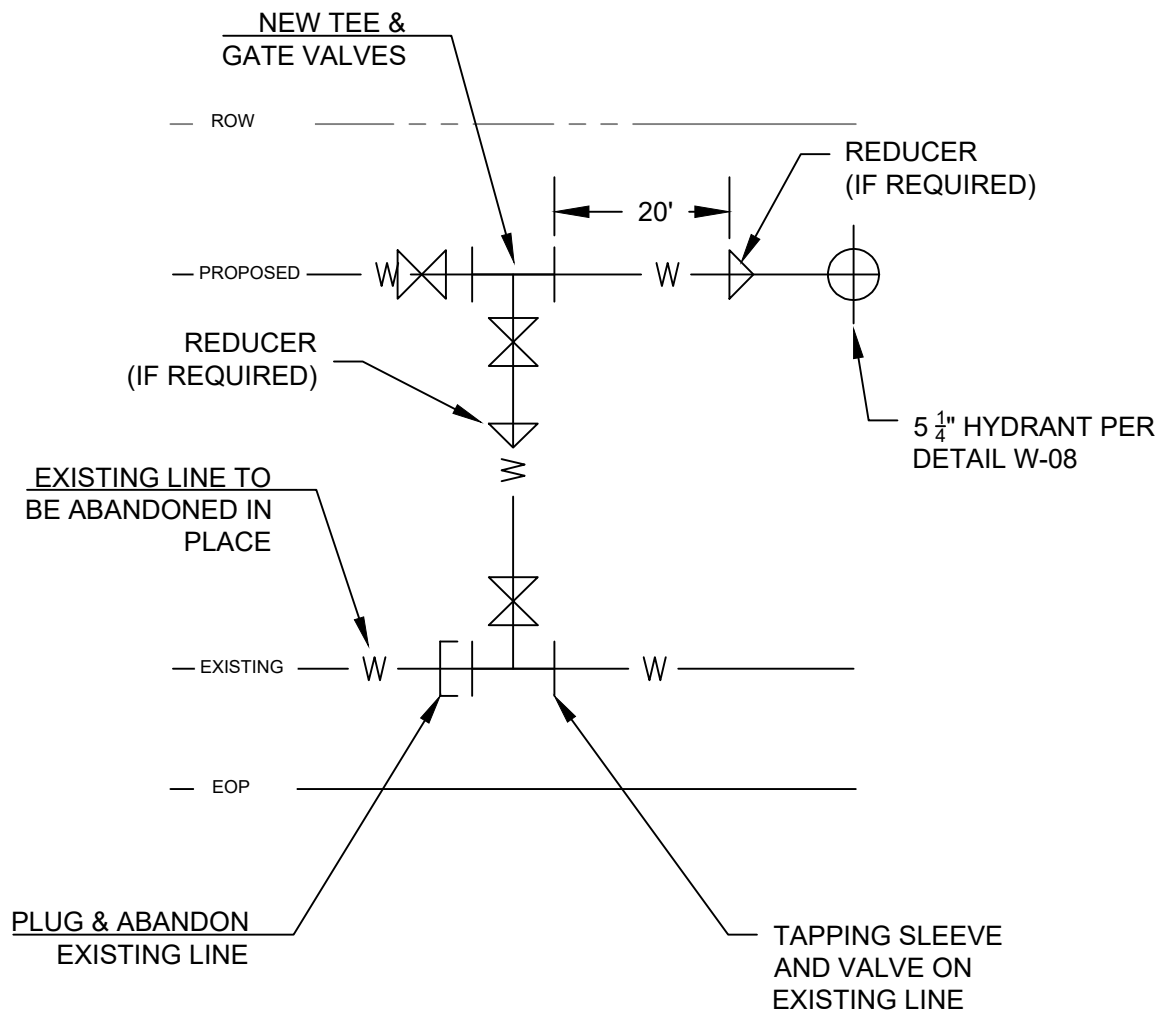


GENERAL NOTES:

1. REDUCER MAY BE REQUIRED TO CONNECT NEW WATERLINE TO THE EXISTING.
2. NEW TEE & GATE VALVES SHALL MATCH PROPOSED WATERLINE SIZE.
3. MAINTAIN 20' FROM THE FACE OF THE VALVE TO THE FACE OF THE REDUCER BEFORE HYDRANT.



END OF LINE CONNECTION DETAIL (NO EASEMENT)

N.T.S.



CITY OF PORTLAND
DEPARTMENT OF UTILITIES - WATER
STANDARD WATER DETAILS

REVISION NO: 3
DATE:06/05/2024

W-15